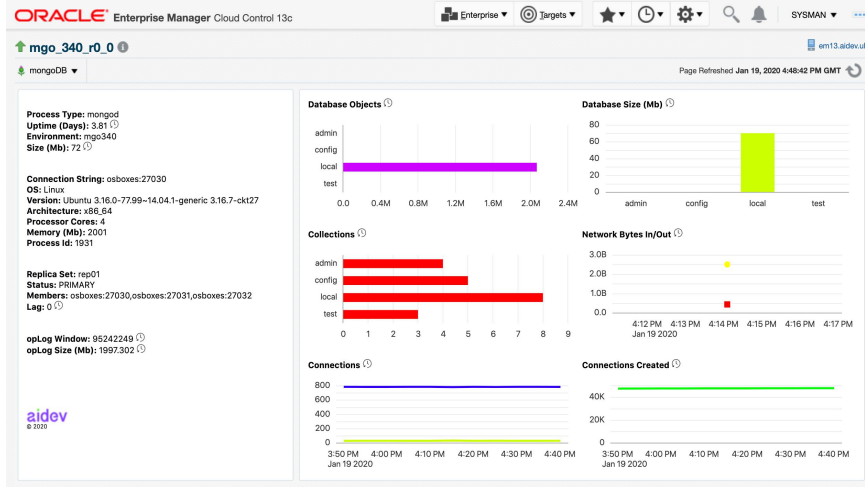




mongoDB Monitoring Plug-in for Oracle Enterprise Manager  
AN OVERVIEW

## Overview

The mongoDB Monitoring Plug-in for Oracle Enterprise Manager provides **centralised visibility** of mongoDB database environments, giving administrators a single view of **component availability and performance at both a database and estate level**.



### Centralised visibility:

- Monitoring of performance, database availability and component status
- Metric collection and alerting enabled out of the box
- Single view of component status and performance at database, environment and estate level
- Support for both SSL and non-SSL based environments
- Capture analyse and report on mongoDB profiling data – identify and resolve long running operations

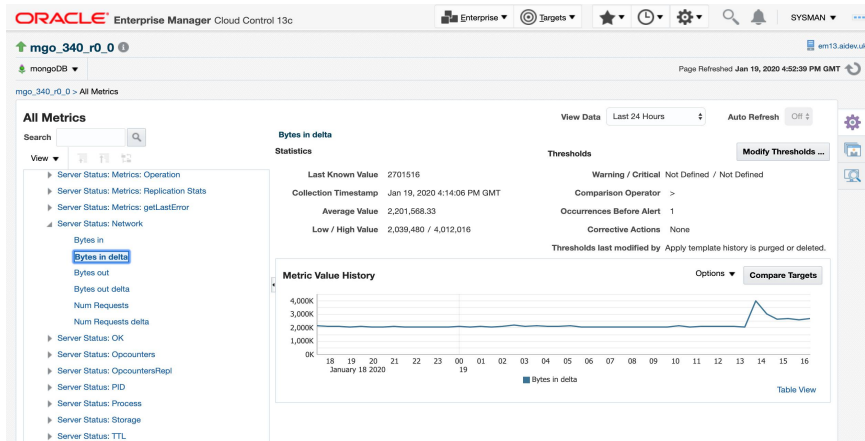
### Centralised configuration collection and management

- Configuration collection enabled out of the box
- Compare and trend configuration changes
- Assist compliance requirements and enforce site specific standards

Monitoring and alerting of mongoDB components is enabled by default with **over 140 metrics** available for use out of the box. Support is provided for both SSL and non-SSL secured environments.

### Direct integration into the core features of EM:

- Availability and performance monitoring
- Historical and realtime metrics
- Blackouts
- Corrective Actions
- Incident rules and alerting
- Advanced notification methods
- Reporting framework
- Systems, Services and Realtime Dashboards
- Create, schedule and reuse javascript jobs against mongoDB targets



**Centrally manage, trend and compare component configuration** for mongoDB environments. Additionally, **configuration standards** can be easily set, checked and enforced at a site level.

By centralising estate management, the plugin can facilitate a **reduction in cost and complexity** within environments that use a combination of mongoDB and Oracle components.

The plugin **integrates directly into the core features of EM**, transparently linking into such features as the monitoring/alerting framework, jobs system and reporting capabilities. This is enabled out of the box.

Additionally, administrators can **customise monitoring and alerting capabilities** through standard EM extensibility features such as metric extensions and monitoring templates/collections.

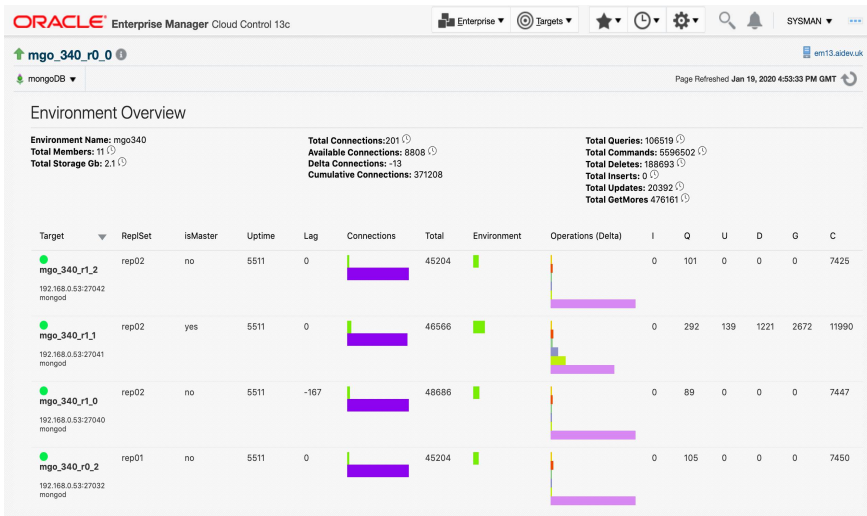
### Additional benefits:

- User customisation through Metric Extensions and the EM reporting framework
- Site Standardisation through Monitoring Templates, Template Collections and Administration Groups
- Correlate cross-component availability and performance
- Increased operational efficiency

## Centralised visibility of performance and availability

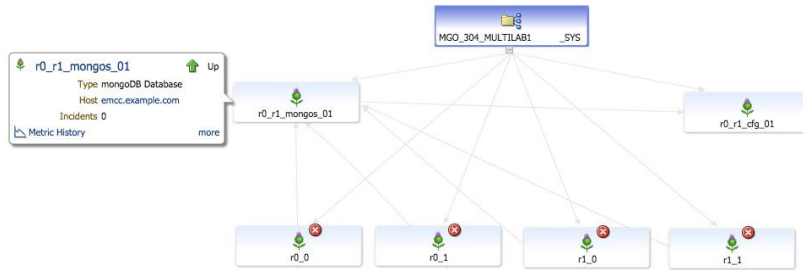
The mongoDB Monitoring Plug-in for Oracle Enterprise Manager provides a **centralised view of the mongoDB estate**.

Related components can be linked together to form mongoDB environments, and viewed through the **Environment At A Glance** page.



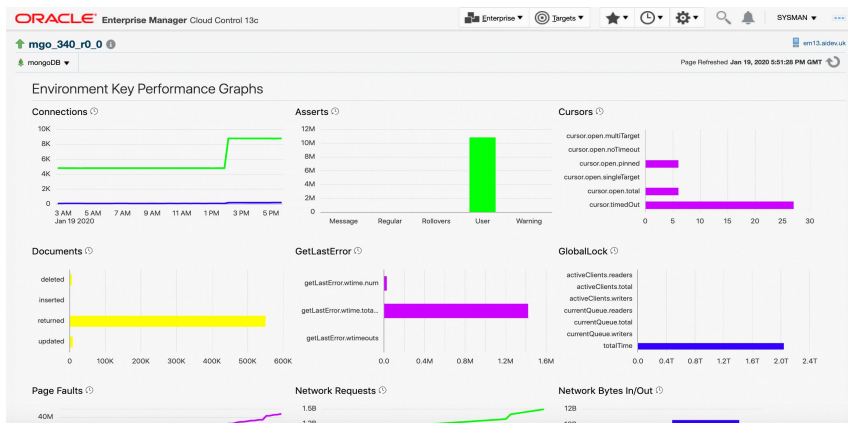
Out of the box features within Oracle Enterprise Manager extend this functionality for non-mongoDB targets (for example, hosts or Oracle databases). By grouping related targets together, administrators can **gain a true top down view of all application tiers**.

Enterprise Manager users can **easily combine related Oracle and mongoDB components to logically model complex application stacks**. This links directly into the Enterprise Manager topology viewer framework and **significantly assists problem analysis** across the technology mix.



Additional configuration can be implemented to enforce **Service Level Agreements** and provide realtime system level **monitoring dashboards**.

The mongoDB Monitoring Plug-in for Oracle Enterprise Manager **automatically collects availability and performance metrics** using pre-defined thresholds, immediately alerting administrators of any issues.



### Estate management benefits:

- Help **reduce monitoring complexity** by managing many as one in a consistent manner
- **Centralise** all monitoring and configuration information
- **Lower total cost of ownership** of estate management
- **Single 'pane of glass' view** of all mongoDB components through topology viewer
- **Single viewpoint of mongoDB environments** detailing core performance and availability metrics

### Environment At A Glance:

A single view of your mongoDB environment:

- Individual target **availability**
- Core **performance** and availability metrics
- **Over 40 aggregate environment metrics**

### Topology Viewer:

A top down graphical representation of your environment detailing core metrics and component status

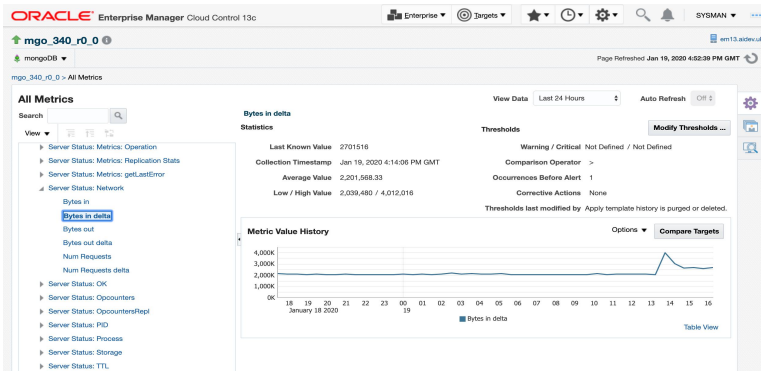
### Key performance indicators include:

- **component availability** at a database level
- component **running status**
- automated collection of **key mongoDB performance metrics**
- related **OS performance statistics** and **host availability** \*using local agent deployment

### Monitoring templates and template collections:

- **standardise, extend** and automatically **enforce monitoring and alerting behaviour**
- **enforce monitoring and alerting standards dependent on target category**, for example target lifecycle status

Enterprise Manager users can **access both realtime and historical key metric information** directly through the application console.



**Comprehensive out of the box monitoring:**

- Over 140 metrics out of the box
- dedicated pages for client information, db and host configuration and storage
- realtime and historical trending of server status metrics
- metric comparisons between targets
- examine database profiler data to identify slow running operations

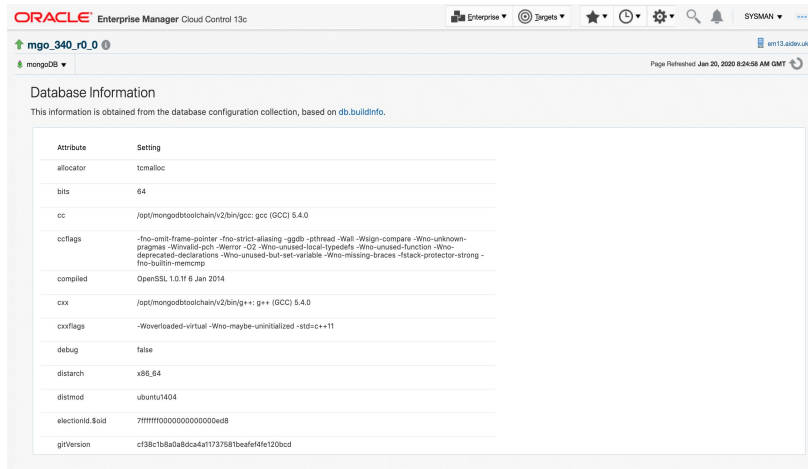
### Centralised configuration management and standardisation

The mongoDB Monitoring Plug-in for Oracle Enterprise Manager **integrates directly** into the existing Enterprise Manager configuration management framework. Collection is enabled out of the box and is by default gathered daily for all components.

Administrators can leverage access into centralised configuration information to **enforce site-specific standards, identify nonconforming components and track configuration changes** across the estate.

**Configuration management features:**

- View detailed configuration snapshot information and track historical changes across the entire estate
- Assist compliance requirements and enforce site standards through cross-component configuration comparisons



### Direct Integration

The mongoDB Monitoring Plug-in for Oracle Enterprise Manager **integrates directly** into the existing Enterprise Manager alerting, incident management and notification frameworks.

Administrators can **define incident rules** to initiate actions based on metric conditions, alerting through advanced notification methods such as email or SNMP traps. Rules can be created to automatically raise or manage incidents within EM, assigning to administrators.

**Direct integration with the following EM features:**

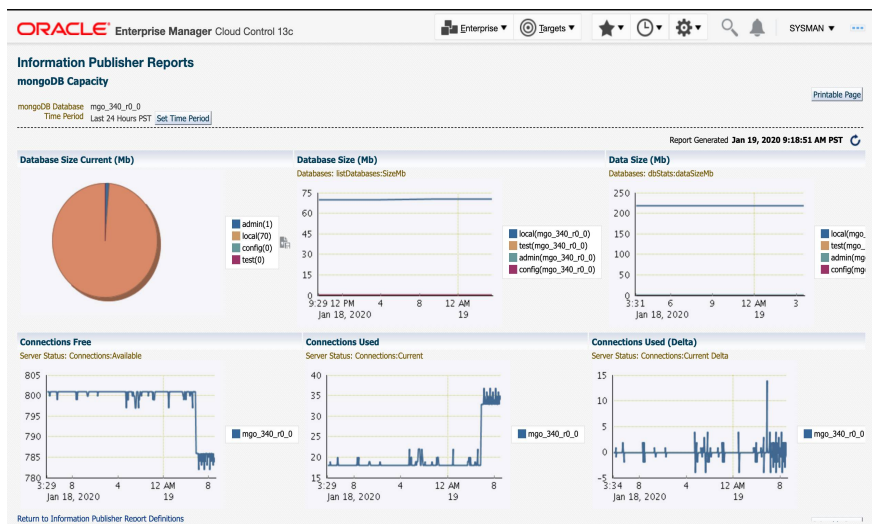
- **Blackouts:** prevent alerts from being raised during maintenance or planned outages
- **Metric extensions:** complement out of the box monitoring through custom metrics
- **Corrective Actions:** ensure that predefined responses to alerts are automatically actioned before users are affected
- **Groups / Systems/ Services:** group related targets and manage as one entity. Define and monitor SLAs
- **Monitoring Templates and Template Collections:** standardise monitoring settings, manually apply to targets/groups or implement automatic enforcement through administration groups

## Reporting Capabilities

The mongoDB Monitoring Plug-in for Oracle Enterprise Manager is integrated with the Enterprise Manager reporting framework. **Out of the box reports** provided by the plugin provide health and configuration reporting capability at a target, environment and estate level.

Reports can be initiated **realtime** or **scheduled**. Reporting output can be emailed to administrators or staged on the public EM reporting url.

Administrators can further enhance reporting through **user-defined reports**.



### Out of the box reporting:

- **Integrated** with EM reporting framework
- **Target, environment** and **estate** level
- Historical **trending**
- **Interactive** or **scheduled** reports with the ability to **email** output or **publish** on a public url
- User **extensible**

## Job Scheduling for .js scripts

The mongoDB Monitoring Plug-in for Oracle Enterprise Manager provides administrators with the ability to **create .js script jobs** and execute these against mongoDB targets.

Jobs can be initiated in an **ad hoc** manner or **scheduled** to recur. Integration with the EM jobs library allows for job reuse across targets.

### Run .js jobs:

- **Create, schedule and execute .js script jobs** against mongoDB databases.
- **Save jobs** within the EM job library for reuse.
- **Build a library** of custom .js scripts for your site.

## Compatibility and customisation

The mongoDB Monitoring Plug-in for Oracle Enterprise Manager is **compatible with the latest releases** of mongoDB and EM.

AIDEV can provide the ability to tailor the plugin to your site standards. For more information on this service, please contact us.

### Product compatibility:

- Oracle Enterprise Manager Cloud Control version 13.2.0.1.0 and above
- mongoDB version 2.6.5 and above
- Requires a remote linux EM agent eg. RHEL



**NEED FURTHER INFORMATION?** email [info@aidev.uk](mailto:info@aidev.uk) for more details on this product and how to join up with us.

Copyright © 2024 Aidev (A trading name of Wardrop Consulting Limited). All rights reserved.

MongoDB and the leaf logo are trademarks or registered trademarks of mongoDB Inc or its affiliates in the U.S. and other countries. Microsoft, SQL Server, and Windows are either registered trademarks or trademarks of Microsoft Corporation in the United States and/or other countries. Oracle and Oracle Enterprise Manager are trademarks or registered trademarks of Oracle and/or its affiliates. Other names may be trademarks of their respective owners.

Please ensure you have appropriate licenses for running this product. Aidev takes no responsibility whatsoever re. site licensing of Oracle EM, mongoDB or any other software used with this plugin – this responsibility lies solely with the Client.

Specifications and product offerings subject to change without notice.